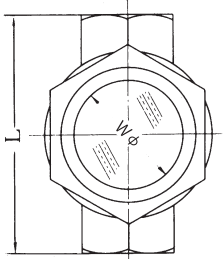
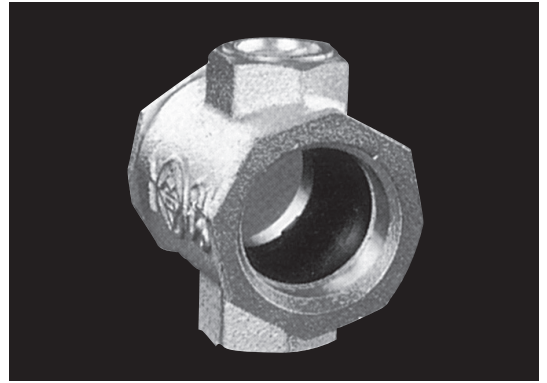
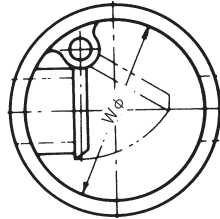


SIGHT FLOW TYPE

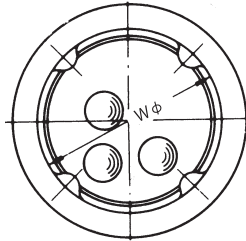
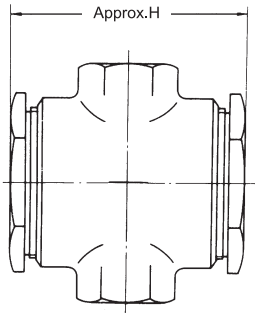
SCREWED



Flow Gauge
[FFG-S]



With Flapper
[FPS-S]



With Floats
[FFS-S]

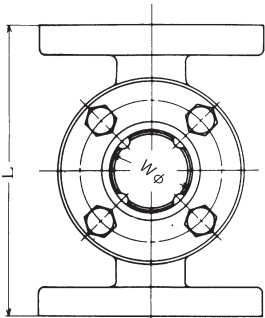
DIMENSION

unit:mm

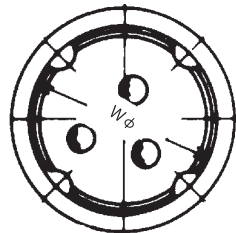
NOMINAL DIA	TYPE		WINDOW DIA Wφ	FACE TO FACE L	HEIGHT APPROX.H	
	FC	BC				
10A	3/8"	FFG,FPS,FFS-10S	BFG,BPS,BFS-10S	35	80	80
15	1/2"	FFG,FPS,FFS-15S	BFG,BPS,BFS-15S	35	80	80
20	3/4"	FFG,FPS,FFS-20S	BFG,BPS,BFS-20S	45	95	90
25	1"	FFG,FPS,FFS-25S	BFG,BPS,BFS-25S	55	110	105
32	1 1/4"	FFG,FPS,FFS-32S	BFG,BPS,BFS-32S	65	135	125
40	1 1/2"	FFG,FPS,FFS-40S	BFG,BPS,BFS-40S	65	135	125
50	2"	FFG,FPS,FFS-50S	BFG,BPS,BFS-50S	75	(155) 160	150

() : FPS-50S

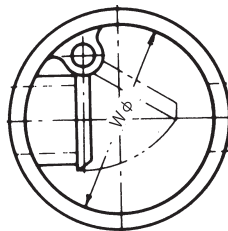
FLANGED



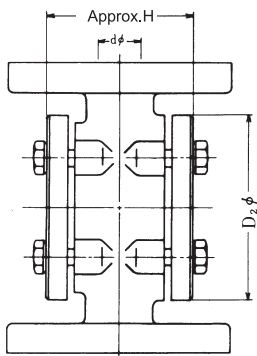
Flow Gauge
[FFG-F]



With Floats
[FFS-F]



With Flapper
[FPS-F]



DIMENSION

unit:mm

NOMINAL DIA	WINDOW DIA Wφ	WINDOW FLANGE D2φ	FACE TO FACE L	HEIGHT	
				APPROX.H	
15A	1/2"	40	90	140	74
20A	3/4"	40	90	150	74
25A	1"	50	100	160	82
40A	1-1/2"	60	110	190	102
50A	2"	75	130	215	121

Flange connection : JIS10K or ASME150Lb